

CX5 technology was developed as an innovative and affordable solution to the limitations of common key cylinders in the fields of physical security and loss prevention.

Through high-precision manufacturing, uncompromising quality standards and original technologies, CX5 delivers

*Better security for everyone!*

[www.cx5security.com](http://www.cx5security.com)

**CX5**  
SECURITY SOLUTIONS



**• MANAGED KEY CONTROL**

Key control is critical for high security. A stolen or copied key is among the most common ways security is breached. CX5 keys are geographically managed and can only be cut by an authorized dealer when presented with a valid CX5 control card.

**• ENHANCED ATTACK RESISTANCE**

Common locks and cylinders can easily be picked or drilled, but CX5 cylinders, protected by hardened steel pins, are more resistant to drilling and other forms of physical attacks.

**• MULTIPLE LOCKING POINTS**

CX5 cylinders have spring-less side pins that must be aligned to release the side bar, acting as a secondary locking mechanism, making them pick and bump resistant. The new Triio cylinders include a patented third locking mechanism, making them even more resistant to pick and bump attacks.

**• FLEXIBLE**

CX5 cylinders are designed to accommodate a variety of leversets, knobsets, mortise locks, deadbolts, exit device trims and padlocks from various hardware manufacturers.

**• EXPANDABLE**

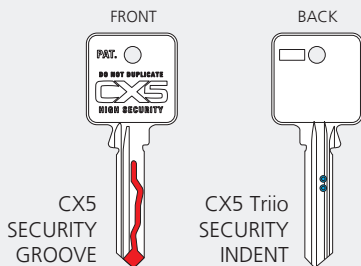
CX5 keying systems can be designed to grow with your keying requirements. New Triio keys are backward compatible with existing CX5 cylinders for seamless integration and enhanced security.

**• AFFORDABLE**

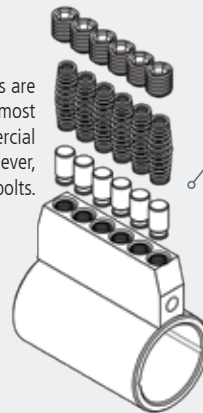
CX5 Security Solutions is committed to offering cost-effective high security solutions to everyone.

**Triio Overview**

Along with the CX5 Security Groove, the CX5 Triio keys have a specially designed and patented Security Indent on the key which interacts with a third locking mechanism, another side bar, within the Triio cylinder. With the key in place, the spring loaded Triio bar retracts from the cylinder housing and into the cylinder's plug, thereby allowing the key to turn.



CX5 KIK cylinders are designed to fit most common commercial and residential lever, knob, and deadbolts.



**PRECISION COMPONENTS**

Set-screw caps, top springs, mushroom pins and bottom pins, facilitate pinning while offering enhanced security.

**HARDENED STEEL PINS**

Offer drill resistance protection to critical components.

**TRIO SIDEBAR**

The third locking mechanism makes a Triio cylinder even more difficult to circumvent.

**CX5 SIDEBAR & PINS**

The second locking mechanism, is released when the spring-less side pins are aligned by the Security Groove on the key. This feature makes the CX5 cylinders pick and bump resistant.

Exploded view of a CX5 Triio 9115T KIK Cylinder



KIK / KIL CYLINDERS



RIM & MORTISE CYLINDERS



DEADBOLTS



SFIC BEST®



LFIC MEDECO®



LFIC SCHLAGE®

**Proven and Innovative High Security Technology Ideal For:**

**RESIDENTIAL APPLICATIONS**

Condominiums & Suites  
Apartment Buildings  
Single Family Homes  
Shared living spaces

**INSTITUTIONAL APPLICATIONS**

Hospitals  
Medical Buildings  
Government Offices  
Schools & Universities  
Utilities

**COMMERCIAL APPLICATIONS**

Retail Centers  
Corporate Offices  
IT / Data Centers  
Warehousing / Storage  
Factory / Plant Access  
Heavy Equipment  
Transport Security



*Better security for everyone!*

Learn more at: [www.cx5security.com](http://www.cx5security.com)

Please contact your local CX5 reseller or distributor to order. Special orders may require additional delivery time and/or minimum order quantities.